

# **F Series Installation Guide**

# Tools required

- Acetone cleaner
- Glue gun
- Bostik 1100 FS Urethane Adhesive
- Roller
- Brush and pan
- Paint scraper
- Soft cloth
- Hammer drill
- Concrete Screws
  - # 8 x 32mm (1 ¼ inch) countersunk square (#1) Stainless Steel AB self tapping screw, Phillips drive.
- Anchor – 6mm x 30mm (0.25 x 1 3/16 inches) plastic anchor
- 6 mm masonry drill bits



# Preparation of Surface

- Thoroughly clean the surface with an industrial cleaner.
- Remove any paint or sealant and then allow the surface to dry



# Alignment (for installation to more than one step)

- Place one piece of step nosing on the top step and one on the bottom step.
- Run a string line from the left edge of the top nosing to the left edge of the bottom nosing.
- This will give you a straight, true line.
- **NOTE:** *The maximum recommended length for installation in outdoor situations is 1.5 meters (5 foot), with a minimum 5mm (0.2 inch) gap between lengths. This allows for thermal expansion in extreme weather conditions and also aids in water drainage off the step tread.*



- Place the nosing firmly against the riser of the step.
- Line it up with your string line
- Mark the location of the drill holes
- Using a 6mm (1/4 inch) masonry bit, drill the hole that will house the plastic anchor

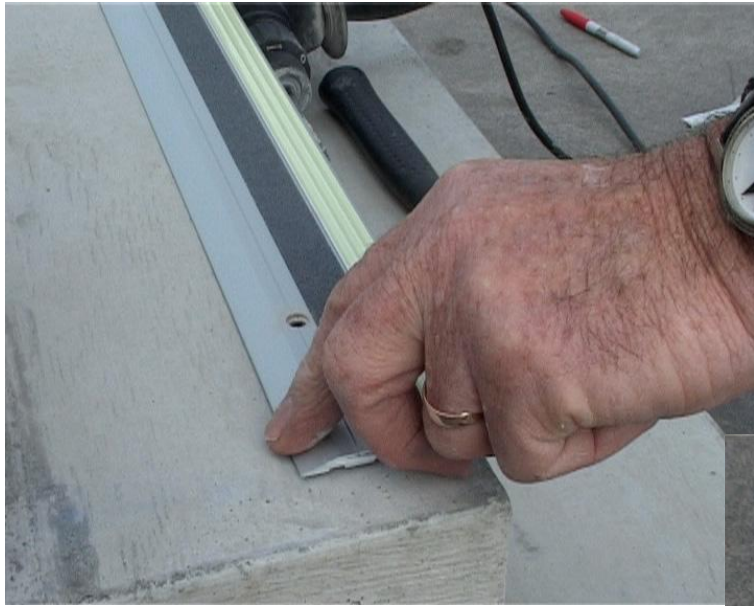


- Wipe away any dust or debris
- Place the plastic anchor fully in to the holes



- Lay a 3mm (1/8 inch) bead in a wave pattern over the full length of the underside of the nosing.
- Keep the adhesive clear of the outside edge and the drill holes.
- **Note:** *Bostik 1100 FS*  
*Expected usage of adhesive is: 22 metres (72ft, 2 inches) per 600ml sausage.*





- Place the nosing firmly back onto the step, lining up the drill holes.
- Tighten the screws firmly - this will create a strong, even bond.

