

# PHOTOLUMINESCENT FLOOR IDENTIFICATION SIGNS

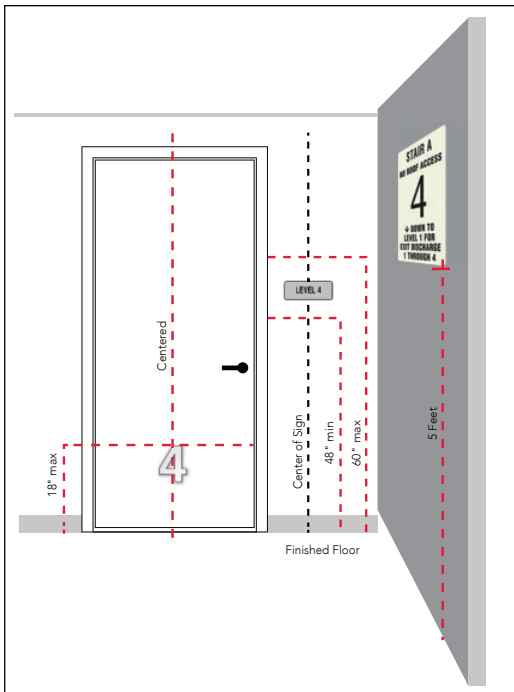


The Photoluminescent Floor Identification Signs (FID) are an important part of egress safety due to the critical information that they provide. Ecoglo® FID meet International Code Council (ICC) and National Fire Protection Agency (NFPA) regulations. FID can be installed using a premium polyurethane adhesive and double-sided tape. The double-sided tape is there to provide initial bonding strength while the polyurethane adhesive is curing.

Weight: 2 lbs/sign.

## ECOGLO FID FEATURES:

- Minimum size 18" by 12"
- Tactile raised letters (ICC A1171.1 compliant)
- Braille beads
- 10 year warranty
- Simple "peel and stick" installation with reliable 3M double sided tape pre-applied to signs
- Safe to use – non-toxic and non-radioactive
- Custom made for each location
- Listed 1994; or ASTM E 2072, except that the charging source shall be 1 foot candle (11 lux) of fluorescent illumination for 60 minutes, and the minimum luminance shall be 30 millicandelas per square meter at 10 minutes and 5 millicandelas per square meter after 90 minutes.



## NFPA STAIRWAY IDENTIFICATION SIGNS

In accordance with the NFPA, tactile floor level signs shall be used alongside Floor Identification Signs and be installed on the stairwell side of a door leading into the interior of the building. Tactile floor level signs should be mounted on the latch side of the door.

Additionally, a 6" reflective number may be installed centered on the door, below the 18" smoke line.

